



Cap # 1



Cap # 2



Cap # 3

Note:

If the existing cap base is not pliable, has either cracks or is brittle (due to age and the sun) or if the seal to the roof has deteriorated, do not attempt to attach the Siphon lid. The risk of water seeping thru a weathered vent base or seal is not worth it. If this is the case, it's a good time to replace the complete unit, and properly reseal to the roof. The complete "360 Siphon" fume extractor, is available.

Vent base modification requires a little work, involving a hack saw, filing, drilling into plastic and gluing.

If you are not sure, consult your local RV dealer.

Misc. Vent caps

Installations for other vent caps than the 3 standard ones on this card are not included here due to the inability of properly sealing out the water.

Adhesives

The siphon lid shadows all glued areas from the sun, allowing use of household products: Goop, No more Nails, 100% silicone rubber.



Cap # 1

Remove the original cap lid.



Modify base

- using a hack saw, cut off the 4 legs and screw post as close as possible to the cap body. File smooth, less chance of blowing debris hanging up on rough edges.

Water sealing

- Looking down into the base opening, if the black vent stack is touching the top of the base, run a bead of caulking in-between the stack and the cap base to insure water will not leak to the outside of the stack. If there is a gap between the stack and the cap base, place supplied water cone down into base opening and into vent stack below. If the sealant cone is required, trim the widest end so its not much larger than the base opening. Using adhesive attach to base.

Bug Screen

If you chose to use the screen, trim the screen down is size to fit the opening, as per the picture on reverse. The screen can also be placed on top of the pipe, (if below the base opening), either case, attach with adhesive.

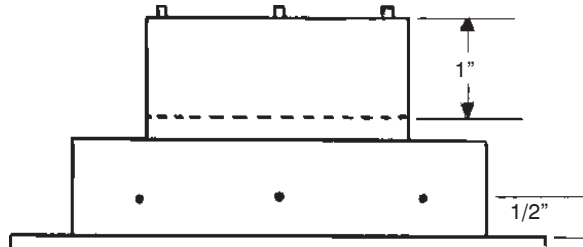
Attaching the Siphon lid

Place the siphon lid over the base, mark leg positions, measure 1/2" from the bottom (top of flange) and mark screw holes. To attach lid to base, drill a 1/8" pilot hole prior to using the supplied screws. Due to the soft plastic, pilot holes may not be necessary. Apply adhesive / sealant around hole area to ensure a good water seal. Do not over tighten screws, plastic can be easily stripped.



Cap 2

Remove the original cap lid.



Base Modification

- Measure 1" down from the top rim of the base, using a hack saw, cut the top inch off (leaving about 1/8 inch lip above the base main body). Sand or file opening smooth.
- If the vent stack is at the same height as where you are cutting, cut the pipe at that level as well.

Water sealing

- Place supplied water cone over base opening into the vent stack, using a little adhesive on the inside of the stack and then sealing the top of sealant cone to the base opening.

Bug Screen

If you chose to use the screen, attach using adhesive to the cone and base.

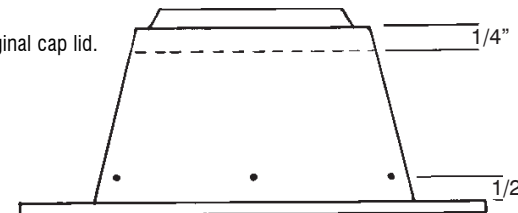
Attaching the Siphon lid

Place the siphon lid over the base, mark leg positions, measure 1/2" from the bottom (top of flange) and mark screw holes. To attach lid to base, drill a 1/8" pilot hole prior to using the supplied screws. Due to the soft plastic, pilot holes may not be necessary. Apply adhesive / sealant around hole area to ensure a good water seal. Do not over tighten screws, plastic can be easily stripped.



Cap 3

Remove the original cap lid.



Base Modification

- Measure 1/4 inch down from the bottom of the tapered lip (1" up from flange). Cut with hack saw, as evenly as possible around the unit.
- File or sand both parts smooth, especially the inside of the base section. The top section you just cut off, is now inverted and placed inside the base, check for the fit, might have file the base inside a little more to have the top and base rims as close as possible. If the vent stack is in the way, carefully enlarge the hole of top section to allow the pipe to protrude thru. If the vent stack is sitting up higher than the modified cap base, hack saw to same height.
- Sand the base and inverted top where the two pieces meet, attach with adhesive.

Water sealing

Looking down into the base opening, if the black vent stack is touching the top of the base, run a bead of calking in-between the stack and the cap base to insure water will not leak to the outside of the stack.

- If there is a gap between the stack and the newly modified cap base, place supplied water cone down into base opening and into vent stack below. Using adhesive attach to base.

Bug Screen

If you chose to use the screen, attach with adhesive to the vent opening..

Attaching the Siphon lid

Place the siphon lid over the base, mark leg positions, measure 1/2" from the bottom (top of flange) and mark screw holes. To attach lid to base, drill a 1/8" pilot hole prior to using the supplied screws. Due to the soft plastic, pilot holes may not be necessary. Apply adhesive / sealant around hole area to ensure a good water seal. Do not over tighten screws, plastic can be easily stripped.



360 SIPHON UNIT

"360 Siphon" Specifications

Constructed with poly carbonate plastic with UV stabilizers

Total unit height: 2.5 inches, outside diameter: 5.5 inches

Fits the standard vent stack (1 1/2" PVC pipe), as well as 2 inch PCV pipe.

The 360 Siphon comes complete with base, lid, sealant collar, and calking.

"360 Siphon" operation will not be hampered if installed under railing, alongside any piece of equipment, or on the outer edge of a roof top.

Installation Instructions

If uncomfortable with working with the roof membrane and water sealants, please see your local RV service center.

- 1) Remove old vent base, careful not to damage roof membrane. Clean area of old calking and dirt. Fill old mounting holes.
- 2) Remove sealant collar and calking from the "360 Siphon", unravel caulking, and attach around the bottom side of the flange, reinstall collar and place over vent stack. Align collar to fit inside of vent stack
- 3) If the base flange does not come in contact with the roof, the vent stack is too high and must be shortened (use a hack saw). Reinstall "360 Siphon" to insure collar fits into stack, if stack is too short, pull collar part way out from the base.
- 4) Secure Flange to roof using exterior screws, ensure screw length is correct for your roof type.

Welcome to odor free RV ing

Web site: 360productsinc.com

Made in Canada

